

# Facts & Figures

**WU**  
WIRTSCHAFTS  
UNIVERSITÄT  
WIEN VIENNA  
UNIVERSITY OF  
ECONOMICS  
AND BUSINESS





# Contents

---

<b>Key Data 2020/21</b>	<b>4</b>
<b>International Recognition</b>	<b>6</b>
<b>Funding</b>	<b>8</b>
<b>Organization</b>	<b>9</b>
<b>Academic Units</b>	<b>10</b>
WU's Departments	10
WU's Competence Centers	10
WU's Research Institutes	11
<b>Programs</b>	<b>12</b>
WU's degree programs	12
WU Executive Academy program portfolio	13
<b>Students</b>	<b>14</b>
<b>Research</b>	<b>18</b>
<b>Campus WU</b>	<b>20</b>
Key Facts	20
Vienna	20
Buildings	21
<b>Contact information</b>	<b>26</b>

# Key Data 2020/21

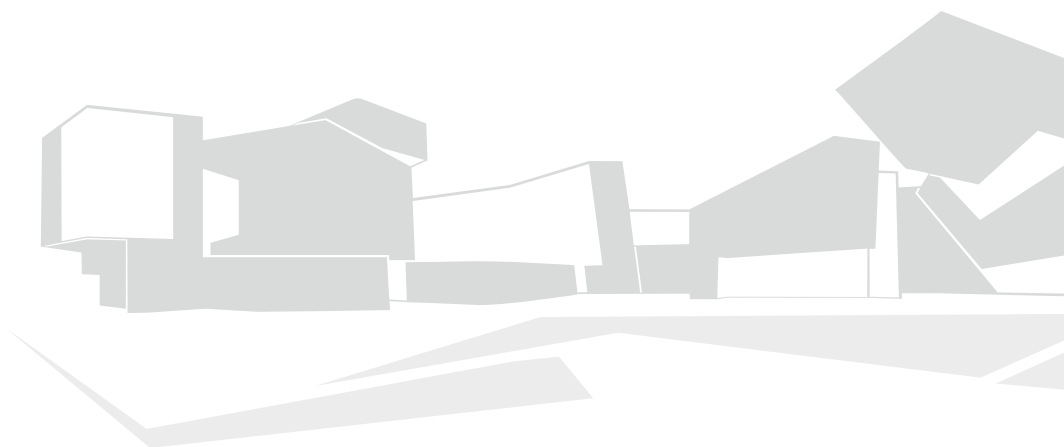
---



## INTERNATIONAL

---

Partner universities \_\_\_\_\_ ~240  
Courses in English \_\_\_\_\_ ~500/semester



## STUDENTS

---

Total students (fall 2020) \_\_\_\_\_ 20,944 (48% women)  
International students (fall 2020) \_\_\_\_\_ 5,830 (49% women)  
Incoming exchange students \_\_\_\_\_ ~1,300 per year  
Outgoing exchange students \_\_\_\_\_ ~1,100 per year



## FACULTY AND STAFF<sup>1</sup>

Total faculty <sup>2</sup>	597 (44% women)
Teachers	116 (43% women)
Administrative staff	546 (68% women)
Total	1,259 (54% women)



## CAMPUS RESOURCES

Premises Campus WU	100,000 m <sup>2</sup>
Premises Library	
Total floor space	7,200 m <sup>2</sup>
Volumes	~ 680,000
Printed journals	569
Electronic journals	27,859
Study places	1,704

<sup>1)</sup> 2020 in full-time equivalents

<sup>2)</sup> not including personnel funded by third parties

# International Recognition

---

## FINANCIAL TIMES RANKING 2020

11<sup>th</sup>

MASTERS IN  
MANAGEMENT

### Global Masters in Management Ranking

WU's "Master in International Management" program placed 9th out of 90 ranked programs worldwide. This puts WU at 2nd place in the German-speaking countries.

32<sup>nd</sup>

EXECUTIVE MBA

### Executive MBA Ranking

The Global Executive MBA moved up to 32nd place. This is the best ranking in the history of the program. The success is mainly due to the quality of the program, its highly qualified students, and the WU Executive Academy's alumni network.

34<sup>th</sup>

EUROPEAN  
BUSINESS SCHOOLS

### European Business Schools Ranking

WU moved up seven places, coming in at 34th place in 2020. This is one of the best results since WU has participated in this ranking, and particularly remarkable because WU is only represented in two of the five sub-rankings that contribute to the overall ranking.

## THE ECONOMIST RANKING 2019

5<sup>th</sup>

MASTERS IN  
MANAGEMENT

### Masters in Management Ranking

WU participated in this ranking for the first time with its Master in International Management/CEMS (MIM) program and made a sensational debut, coming in at 5th place out of 40 programs from around the world. This result makes WU the second-best university from the German-speaking region represented in the ranking.

## QS WORLD UNIVERSITY RANKINGS 2020/21

# 3<sup>rd</sup>

MASTERS IN  
SUPPLY CHAIN  
MANAGEMENT

### **Masters in Supply Chain Management Ranking**

WU's Master's Program in Supply Chain Management took third place out of 46 ranked programs in its very first appearance in the QS ranking.

# 10<sup>th</sup>

MASTERS IN  
MARKETING

### **Masters in Marketing Ranking**

The WU Master's Program in Marketing has again been ranked among the top 10 programs worldwide.

# 10<sup>th</sup>

MASTERS IN  
MANAGEMENT

### **Masters in Management Ranking**

The Strategy, Innovation, and Management Control program moved up eight places in the QS Masters in Management ranking and is now among the top 10 programs worldwide for the first time.

# 18<sup>th</sup>

MASTERS  
IN FINANCE

### **Masters in Finance Ranking**

WU provides an outstanding education to future managers. The Master's Program in Quantitative Finance came in at an impressive 18th out of 166 renowned programs from around the globe.

## ACCREDITED BY



## INTERNATIONAL MEMBERSHIPS



# Funding

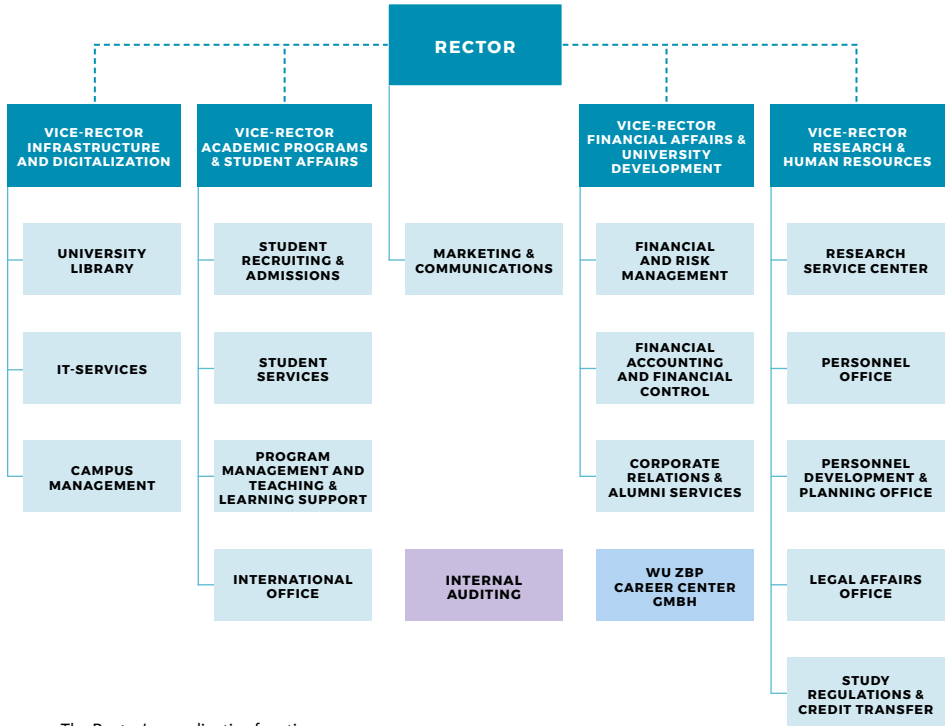
---

## FUNDING 2020

Revenues (in million EUR)	2020	2020 in %
Federal Ministry of Science and Research	132.7	77.8
Tuition fees (including State Compensation for Tuition fees)	3.4	2.0
Research funding for projects	14.0	8.2
Other income and overheads	7.5	4.4
Executive education	9.4	5.5
Changes unfinished services – research grants	–0.8	–0.5
Research grants	3.8	2.2
Financial income	0.6	0.3
<b>Total</b>	<b>170.6</b>	<b>100.0</b>
Expenses (in million EUR)		
Personnel	–110.8	60.6
Operating charges	–63.3	34.6
Depreciation	–8.1	4.4
Costs of goods and services	–0.4	0.2
Financial expenses	0.0	0.0
Taxes	–0.2	0.1
<b>Total</b>	<b>–182.8</b>	<b>100.0</b>



# Organization



# Academic Units

---

## WU'S DEPARTMENTS

<b>Economics</b>	<a href="https://wu.ac.at/en/economics">wu.ac.at/en/economics</a>
<b>Finance, Accounting and Statistics</b>	<a href="https://wu.ac.at/en/fas">wu.ac.at/en/fas</a>
<b>Foreign Language Business Communication</b>	<a href="https://wu.ac.at/en/bizcomm">wu.ac.at/en/bizcomm</a>
<b>Global Business and Trade</b>	<a href="https://wu.ac.at/en/welthandel">wu.ac.at/en/welthandel</a>
<b>Information Systems and Operations Management</b>	<a href="https://wu.ac.at/en/ipm">wu.ac.at/en/ipm</a>
<b>Management</b>	<a href="https://wu.ac.at/en/management">wu.ac.at/en/management</a> (website in German)
<b>Marketing</b>	<a href="https://wu.ac.at/en/marketing">wu.ac.at/en/marketing</a>
<b>Private Law</b>	<a href="https://wu.ac.at/en/privatelaw">wu.ac.at/en/privatelaw</a>
<b>Public Law and Tax Law</b>	<a href="https://wu.ac.at/en/publicandtaxlaw">wu.ac.at/en/publicandtaxlaw</a>
<b>Socioeconomics</b>	<a href="https://wu.ac.at/en/socioeconomics">wu.ac.at/en/socioeconomics</a>
<b>Strategy and Innovation</b>	<a href="https://wu.ac.at/en/strategy-and-innovation">wu.ac.at/en/strategy-and-innovation</a>

## WU'S COMPETENCE CENTERS

<b>Business Languages</b>	<a href="https://wu.ac.at/en/zfw">wu.ac.at/en/zfw</a>
<b>Emerging Markets and CEE</b>	<a href="https://wu.ac.at/en/emcee">wu.ac.at/en/emcee</a>
<b>Empirical Research Methods</b>	<a href="https://wu.ac.at/en/methods">wu.ac.at/en/methods</a>
<b>Entrepreneurship Center</b>	<a href="https://wu.ac.at/en/starting-up">wu.ac.at/en/starting-up</a>
<b>Experimental Research</b>	<a href="https://wu.ac.at/en/exp">wu.ac.at/en/exp</a>
<b>Non-profit Organizations and Social Entrepreneurship</b>	<a href="https://wu.ac.at/en/npocompetence">wu.ac.at/en/npocompetence</a>
<b>Sustainability Transformation and Responsibility</b>	<a href="https://wu.ac.at/en/star">wu.ac.at/en/star</a>

---

**WU'S RESEARCH INSTITUTES**

<b>Capital Markets</b>	<a href="https://www.wu.ac.at/en/isk">wu.ac.at/en/isk</a>
<b>CEE Legal Studies</b>	<a href="https://www.wu.ac.at/fowi">wu.ac.at/fowi</a> (website in German)
<b>Computational Methods</b>	<a href="https://www.wu.ac.at/en/firm">wu.ac.at/en/firm</a>
<b>Co-Operation and Co-Operatives</b>	<a href="https://www.wu.ac.at/ricc">wu.ac.at/ricc</a> (website in German)
<b>Cryptoeconomics</b>	<a href="https://www.wu.ac.at/en/cryptoeconomics">wu.ac.at/en/cryptoeconomics</a>
<b>Economics of Aging</b>	<a href="https://www.wu.ac.at/en/altersoekonomie">wu.ac.at/en/altersoekonomie</a>
<b>Economics of Inequality</b>	<a href="https://www.wu.ac.at/ineq">wu.ac.at/ineq</a> (website in German)
<b>European Affairs</b>	<a href="https://www.wu.ac.at/en/europainstitut">wu.ac.at/en/europainstitut</a>
<b>Family Business</b>	<a href="https://www.wu.ac.at/en/research-institute-for-family-business">wu.ac.at/en/research-institute-for-family-business</a>
<b>International Taxation</b>	
<b>Regulatory Economics</b>	<a href="https://www.wu.ac.at/en/regulation">wu.ac.at/en/regulation</a>
<b>Spatial and Real Estate Economics</b>	<a href="https://www.wu.ac.at/en/immobilienwirtschaft">wu.ac.at/en/immobilienwirtschaft</a>
<b>Supply Chain Management</b>	<a href="https://www.wu.ac.at/en/scm">wu.ac.at/en/scm</a>
<b>Urban Management and Governance</b>	<a href="https://www.wu.ac.at/en/urban">wu.ac.at/en/urban</a>

# Programs

## WU'S DEGREE PROGRAMS

<b>BACHELOR'S PROGRAMS</b>	<ul style="list-style-type: none"> <li>› <b>Business, Economics and Social Sciences</b> (BSc WU) four majors:               <ul style="list-style-type: none"> <li>› Business Administration</li> <li>› International Business Administration</li> <li>› Economics and Socioeconomics</li> <li>› Information Systems</li> </ul> </li> <li>› <b>Business and Economics</b> (BSc WU), English</li> </ul>	<ul style="list-style-type: none"> <li>› <b>Business Law</b> (LL.B. WU)</li> </ul>
<b>MASTER'S/LL.M. PROGRAMS</b>	<ul style="list-style-type: none"> <li>› <b>Business Education</b> (MSc WU)</li> <li>› <b>Export and Internationalization Management</b> (MSc WU)</li> <li>› <b>Finance and Accounting</b> (MSc WU)</li> <li>› <b>Management</b> (MSc WU)</li> <li>› <b>Socioeconomics</b> (MSc WU)</li> <li>› <b>Taxation and Accounting</b> (MSc WU)</li> </ul> <ul style="list-style-type: none"> <li>› <b>Digital Economy</b> (MSc WU), English</li> <li>› <b>Economics</b> (MSc WU), English</li> <li>› <b>International Management/CEMS</b> (MSc WU &amp; CEMS MIM), English</li> <li>› <b>Marketing</b> (MSc WU), English</li> <li>› <b>Quantitative Finance</b> (MSc WU), English</li> <li>› <b>Socio-Ecological Economics and Policy</b> (MSc WU), English</li> <li>› <b>Strategy, Innovation, and Management Control</b> (MSc WU), English</li> <li>› <b>Supply Chain Management</b> (MSc WU), English</li> </ul>	<ul style="list-style-type: none"> <li>› <b>Business Law</b> (LL.M. WU)</li> </ul>
<b>DOCTORAL/PHD PROGRAMS</b>	<ul style="list-style-type: none"> <li>› <b>Social and Economic Sciences</b> (Dr. rer. soc. oec.)</li> <li>› <b>PhD Program in Economics and Social Sciences</b> (PhD), German with English tracks (intended mainly for WU's academic staff)</li> </ul> <ul style="list-style-type: none"> <li>› <b>PhD in Finance</b> (PhD), English</li> <li>› <b>PhD in International Business Taxation</b> (PhD), English</li> </ul>	<ul style="list-style-type: none"> <li>› <b>Business Law</b> (Dr. iur.)</li> </ul>

## WU EXECUTIVE ACADEMY PROGRAM PORTFOLIO

<b>MBA/MASTER OF LAWS PROGRAMS</b>	<ul style="list-style-type: none"> <li>› Global Executive MBA</li> <li>› Executive MBA Bucharest</li> <li>› Professional MBA with specialization areas               <ul style="list-style-type: none"> <li>› Digital Transformation and Data Science</li> <li>› Energy Management</li> <li>› Entrepreneurship &amp; Innovation</li> <li>› Finance</li> <li>› Health Care Management</li> <li>› Marketing &amp; Sales</li> <li>› Project Management</li> <li>› Public Auditing</li> </ul> </li> </ul>	<ul style="list-style-type: none"> <li>› LL.M. International Tax Law</li> <li>› LL.M. Digitalization &amp; Tax Law</li> <li>› Master of Business Law (Corporate Law)</li> <li>› Master of Legal Studies</li> </ul>
<b>CERTIFICATE PROGRAMS</b>	<ul style="list-style-type: none"> <li>› Health Care Management</li> <li>› Logistics &amp; Supply Chain Management</li> <li>› Marketing &amp; Sales</li> <li>› Public Auditing</li> <li>› Risk &amp; Insurance Management</li> <li>› Social Management</li> <li>› Tourism &amp; Event Management</li> </ul>	
<b>BBA DIPLOM BETRIEBSWIRTIN<sup>WU</sup></b>	<ul style="list-style-type: none"> <li>› Logistics &amp; Supply Chain Management</li> <li>› Marketing &amp; Sales</li> <li>› Risk &amp; Insurance Management</li> <li>› Tourism &amp; Event Management</li> </ul>	
<b>CUSTOM PROGRAMS AND SHORT PROGRAMS</b>	<p><b>Custom Programs</b></p> <ul style="list-style-type: none"> <li>› In-house MBA<sup>WU</sup></li> <li>› Leadership Academy<sup>WU</sup></li> <li>› Management Development Program<sup>WU</sup></li> <li>› Compact Course<sup>WU</sup></li> <li>› Executive/Expert Lounge<sup>WU</sup></li> <li>› Special Workshops<sup>WU</sup></li> <li>› Field Trips<sup>WU</sup></li> </ul>	<p><b>Short Programs</b></p> <ul style="list-style-type: none"> <li>› Pioneers of the 21st century</li> <li>› Governance Excellence – for supervisory board members</li> <li>› Employer Brand Manager</li> <li>› Data Science</li> <li>› Digital Transformation</li> <li>› Blockchain Transforming Business</li> <li>› Agile Leadership</li> <li>› Emerging Leaders</li> <li>› Data Governance</li> <li>› Strategic Management</li> <li>› Organizational Design</li> <li>› Cross Mentoring</li> <li>› Recruiting Campus</li> <li>› Change Management Toolkit</li> </ul>

# Students

---

STUDENT ENROLLMENT	Fall 2018	Fall 2019	Fall 2020	Percent women
<b>Total students</b>	22,016	21,453	20,944	48%
degree program students	20,504	20,103	19,642	48%
international students	6,023	6,078	5,830	49%
<b>New students<sup>1</sup></b>	5,855	4,218	4,336	50%
first-time university enrollments <sup>2</sup>	4,205	3,380	3,360	49%

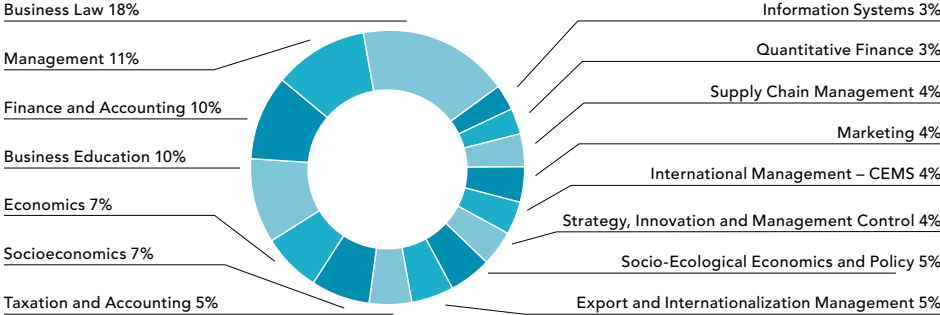
<sup>1</sup> "New students" refers to first-time WU students and includes both program and non-program students.

<sup>2</sup> "First-time university enrollments" refers to students enrolled in an Austrian university program for the first time, such as high school graduates, graduates of a university of applied sciences, as well as students or graduates from a foreign institution of higher education.

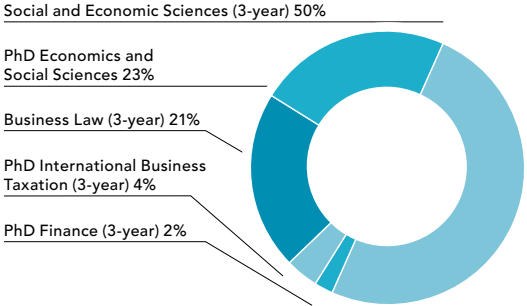
ENROLLMENT BY PROGRAM <sup>3</sup>	Fall 2018	Fall 2019	Fall 2020
Bachelor students	16,163	15,556	15,068
MSc students	3,413	3,589	3,976
Doctoral/PhD students	727	771	772

<sup>3</sup> Students may be enrolled in more than one type of program. This is why the enrollment statistics by program differ from the total number of degree-program students.

### ENROLLMENT DISTRIBUTION MSC PROGRAMS

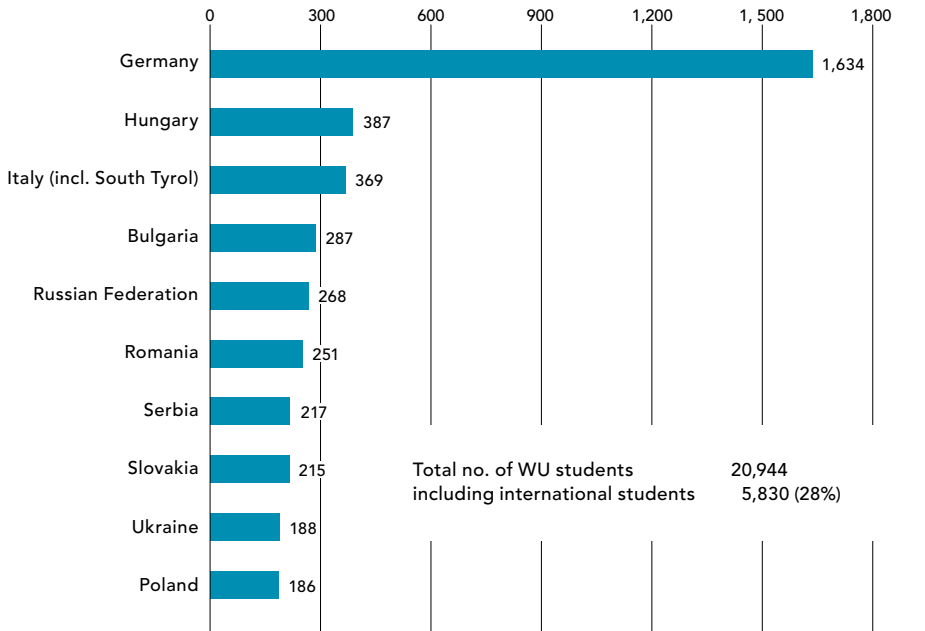


### ENROLLMENT DISTRIBUTION DOCTORAL/PHD PROGRAMS



---

## WU'S INTERNATIONAL STUDENTS: TOP 10\*



\* as of January 2021



GRADUATES	Academic year 2017/18	Academic year 2018/19	Academic year 2019/20	Percent women
<b>Total graduates</b>	3,033	3,020	3,439	47%
bachelor's programs	1,937	2,010	2,203	47%
master's programs	1,009	933	1,149	46%
doctoral programs	87	77	87	40%

## SERVICES FOR STUDENTS AND GRADUATES



**ZBP**  
CAREER CENTER

- › 1,427 job offers in 2020, incl. qualified internships and part-time student jobs
- › Career Center's experts held 1,197 career counselling sessions
- › 68 employers attended on-campus career events



**ALUMNI**

- › 55,000 alumni
- › more than 60 hubs worldwide
- › 120 nations

# Research

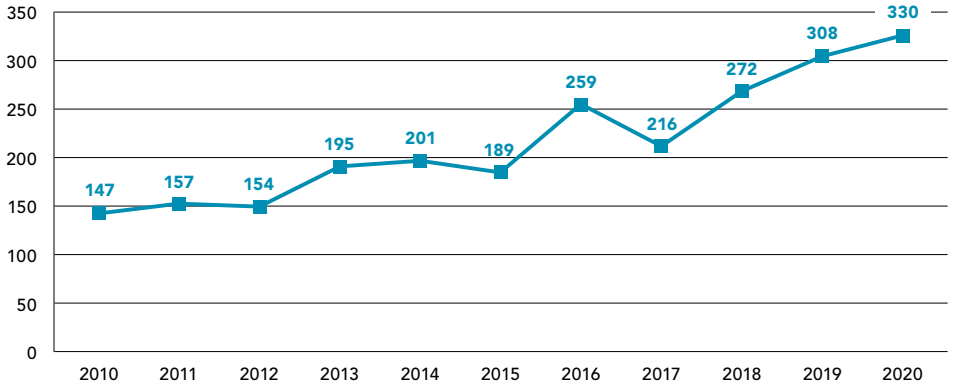
THIRD-PARTY FUNDING 2020	National	EU	Non-EU countries	Total
EU	–	2,099,891.02	–	2.099.891,02
Other international organisations	–	197,282.74	114,178.16	311,460.90
Federal Republic of Austria	115,568.32	–	–	115,568.32
States	460,062.68	–	–	460,062.68
OeAW	84,899.70	–	–	84,899.70
Municipalities and associations of municipalities (excluding Vienna)	5,825.45	–	–	5,825.45
FWF	1,769,605.82	–	–	1,769,605.82
FFG	662,918.48	–	–	662,918.48
OeNB Anniversary Fund	645,115.42	–	–	645,115.42
Other public institutions	446,783.20	138,382.95	14,837.76	600,003.91
Corporate partners	442,030.69	389,515.27	265,693.46	1,097,239.42
Private	1,568,253.86	257,681.87	7,481.06	1,833,416.79
Miscellaneous	2,948,623.22	68,192.35	26,754.97	3,043,570.54
<b>Total</b>	<b>9,149,686.84</b>	<b>3,150,946.20</b>	<b>428,945.41</b>	<b>12,729,578.45</b>

FWF = Austrian Science Fund, OeAW = Austrian Academy of Sciences, OeNB = Oesterreichische Nationalbank, FFG = Austrian Research Promotion Agency

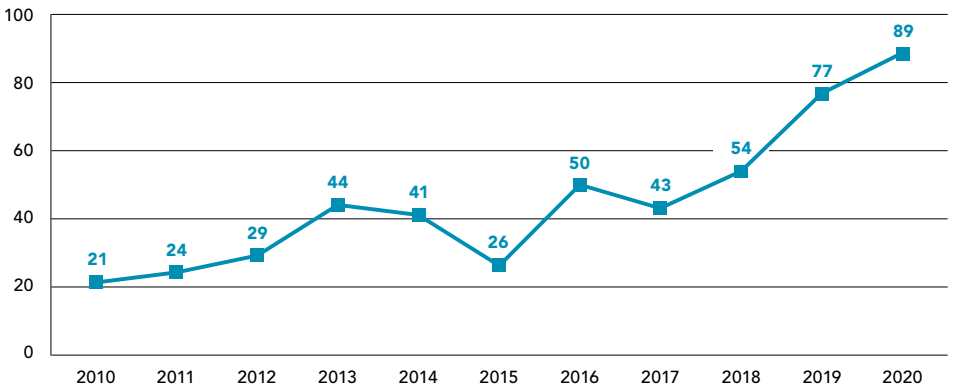
## RESEARCH OUTPUT 2020

- › 43 books, monographs
- › 480 original contributions to collections
- › 864 original journal contributions
- › 60 working/discussion papers, preprints
- › 59 proceedings contributions
- › 403 presentations at academic conferences
- › 51 editorships (of individual volumes)

## SCOPUS-LISTED PAPERS BY WU RESEARCHERS SINCE 2010



## SCOPUS-LISTED PAPERS BY WU RESEARCHERS SINCE 2010, TOP INTERNATIONAL JOURNALS



# Campus WU

---

Diversity, open-mindedness, responsibility, and innovation – the Campus WU is the concrete realization of WU's vision for a modern university. The new architecture reflects the values and ideas WU stands

for. The campus consists of seven building complexes, designed by international architects, clustered around the central Library & Learning Center.

## KEY FACTS

- › Seven building complexes, approx. 100,000m<sup>2</sup> total floor space
- › Property area: 90,000m<sup>2</sup>, 560 meters long and between 150 and 210 meters wide
- › 55,000 m<sup>2</sup> publicly accessible grounds
- › Approximately 4,000 rooms, including 90 auditoriums and seminar rooms seating well over 5,000 students
- › A total of 3,000 student workstations on campus, 1,500 in the Central Library

## VIENNA

Population City of Vienna	1.9 million
Population greater metropolitan area	2.8 million
Size	415 km <sup>2</sup>
Quality of Living (Mercer), 2009–2019	1st place
Monocle's Most Livable Cities Index, 2019	5th place



1



2

BUILDING	KEY FACTS	UNITS
<p><b>LC:</b>  <b>Library &amp; Learning Center</b>            [1]</p>	<ul style="list-style-type: none"> <li>› Architects: Zaha Hadid Architects, Hamburg</li> <li>› Total floor space: approx. 44,000m<sup>2</sup></li> <li>› 1,500 student workstations</li> <li>› Cantilevered roof with monitor</li> </ul>	<ul style="list-style-type: none"> <li>› Student Services</li> <li>› IT Services</li> <li>› International Office</li> <li>› WU ZBP Career Center</li> </ul> <p><b>Competence Center</b></p> <ul style="list-style-type: none"> <li>› Business Language Center</li> </ul> <p><b>Central Library</b></p> <ul style="list-style-type: none"> <li>› Library management</li> </ul>
<p><b>EA:</b>  <b>WU Executive Academy</b>            [2]</p>	<ul style="list-style-type: none"> <li>› Architects: NO.MAD Arquitectos, Madrid</li> <li>› Total floor space: approx. 7,000m<sup>2</sup></li> <li>› Reflective façade</li> </ul>	<ul style="list-style-type: none"> <li>› WU Executive Academy</li> <li>› Corporate Relations &amp; Alumni Services</li> </ul> <p><b>Competence Center</b></p> <ul style="list-style-type: none"> <li>› Sustainability Transformation and Responsibility</li> </ul>



BUILDING	KEY FACTS	UNITS
<p><b>D4:</b> <b>Departments</b></p>	<ul style="list-style-type: none"> <li>› Architects: Estudio Carme Pinós S. L., Barcelona</li> <li>› Total floor space: approx. 19,000m<sup>2</sup></li> <li>› 'Tetris' façade</li> </ul>	<p><b>Departments</b></p> <ul style="list-style-type: none"> <li>› Economics</li> <li>› Finance, Accounting and Statistics (without Accounting)</li> <li>› Socioeconomics (without Managing Sustainability and Ecological Economics)</li> </ul> <p><b>Research Institutes</b></p> <ul style="list-style-type: none"> <li>› Computational Methods</li> <li>› European Affairs</li> </ul> <p><b>OeNB Library for Social Sciences</b></p>



BUILDING	KEY FACTS	UNITS
<p><b>D3/AD: Departments and Administration</b></p>	<ul style="list-style-type: none"> <li>› Architects: CRABstudio, London</li> <li>› Total floor space: approx. 25,000m<sup>2</sup></li> <li>› Two-part complex</li> <li>› Yellow-orange-red façade faced with wooden planks</li> </ul>	<p><b>Departments</b></p> <ul style="list-style-type: none"> <li>› Finance, Accounting and Statistics (Accounting only)</li> <li>› Private Law</li> <li>› Public Law and Tax Law</li> </ul> <p><b>Research Institutes</b></p> <ul style="list-style-type: none"> <li>› CEE Legal Studies</li> <li>› International Taxation</li> <li>› Urban Management and Governance</li> </ul> <p><b>Administration</b></p> <ul style="list-style-type: none"> <li>› Rector’s Council</li> <li>› University management</li> </ul> <p><b>Library for Law</b></p>



BUILDING	KEY FACTS	UNITS
<p><b>TC/D1: Teaching Center and Departments</b> [1]</p>	<ul style="list-style-type: none"> <li>› Architects: BUSarchitektur ZT GmbH, Vienna</li> <li>› Total floor space: approx. 32,000m<sup>2</sup></li> <li>› Space for approx. 5,000 people</li> <li>› Auditorium Maximum seats 650</li> </ul>	<p><b>Department</b></p> <ul style="list-style-type: none"> <li>› Global Business and Trade</li> <li>› Socioeconomics (Managing Sustainability only)</li> </ul> <p><b>Research Institutes</b></p> <ul style="list-style-type: none"> <li>› Co-Operation and Co-Operatives</li> <li>› Family Business</li> <li>› Supply Chain Management</li> </ul> <p><b>Competence Centers</b></p> <ul style="list-style-type: none"> <li>› Emerging Markets &amp; CEE</li> <li>› Entrepreneurship Center</li> </ul>
<p><b>AR: Administration and Research</b> [2]</p>	<ul style="list-style-type: none"> <li>› Architects: Franz &amp; Sue</li> <li>› Floor space: 4,300m<sup>2</sup></li> <li>› Innovative wooden façade</li> <li>› Almost entirely energy self-sufficient</li> </ul>	<p><b>Administration</b></p> <p><b>Research institute</b></p> <ul style="list-style-type: none"> <li>› Cryptoeconomics</li> </ul> <p><b>Competence center</b></p> <ul style="list-style-type: none"> <li>› Nonprofit Organizations and Social Entrepreneurship</li> </ul>





1



2

BUILDING	KEY FACTS	UNITS
<b>D2/SC: Departments and Student Center</b> [1]	<ul style="list-style-type: none"> <li>› Architects: Atelier Hitoshi Abe, Japan</li> <li>› Total floor space: approx. 29,000 m<sup>2</sup></li> <li>› Two building segments</li> <li>› Millefeuille building structure</li> </ul>	<b>Departments</b> <ul style="list-style-type: none"> <li>› Foreign Language Business Communication</li> <li>› Information Systems and Operations</li> <li>› Management</li> <li>› Marketing</li> </ul> <b>Research Institute</b> <ul style="list-style-type: none"> <li>› Urban Management and Governance</li> </ul> <b>Competence Center</b> <ul style="list-style-type: none"> <li>› Non-profit Organizations and Social Entrepreneurship (only Social Entrepreneurship)</li> </ul> <b>Students' Union</b>
<b>D5: Departments</b> [2]	<ul style="list-style-type: none"> <li>› Holzer Kobler Architekturen and Freimüller Söllinger Architektur ZT GmbH</li> <li>› Three segments used for different purposes: WU, Sigmund Freud Privat Universität, student apartments</li> <li>› communicative area in the courtyard</li> </ul>	<b>Departments</b> <ul style="list-style-type: none"> <li>› Strategy and Innovation</li> <li>› Socioeconomics (Ecological Economics only)</li> </ul> <b>Research Institutes</b> <ul style="list-style-type: none"> <li>› Economics of Aging</li> <li>› Regulatory Economics</li> <li>› Spatial and Real Estate Economics</li> </ul> <b>Competence Centers</b> <ul style="list-style-type: none"> <li>› Empirical Research Methods</li> <li>› Experimental Research</li> </ul>

# Contact information

---

## **WU (Vienna University of Economics and Business)**

Welthandelsplatz 1  
1020 Vienna, Austria  
T +43-1-313 36-0  
wu.ac.at

### **Arriving by public transport:**

Subway: U2 stations "Messe-Prater"  
or "Krieau"  
Bus: 82A, "Südportalstraße" stop

## **Regular study programs**

wu.ac.at/en/programs/why-wu  
bachelor.application@wu.ac.at  
master.application@wu.ac.at  
phd.application@wu.ac.at

## **International exchange programs**

short.wu.ac.at/international-office  
zas@wu.ac.at

## **WU Executive Academy**

executiveacademy.at/en  
executiveacademy@wu.ac.at

## **WU Alumni**

wu-alumni.at/en  
alumni@wu.ac.at

## **WU ZBP Career Center**

zbp.at/en  
office@zbp.at

## **Marketing & Communications**

marketingcommunications@wu.ac.at

## **FIND OUT MORE ONLINE**

WU's Annual Report, published in English, and its German counterpart (Jahresbericht) provide detailed information on WU and recent developments in research and teaching.



**Annual Report 2020**  
[annualreport.wu.ac.at/2020/en](https://annualreport.wu.ac.at/2020/en)



**Jahresbericht 2020**  
[annualreport.wu.ac.at/2020](https://annualreport.wu.ac.at/2020)





WU (Vienna University of Economics and Business)  
Welthandelsplatz 1, 1020 Vienna, Austria  
wu.ac.at

Arriving by public transport:  
Subway: U2 stations "Messe-Prater" or "Krieau"  
Bus: 82A, "Südportalstraße" stop